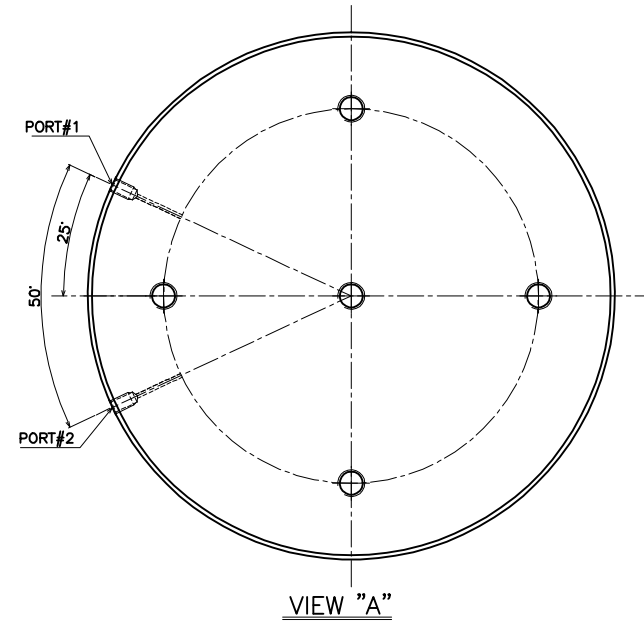
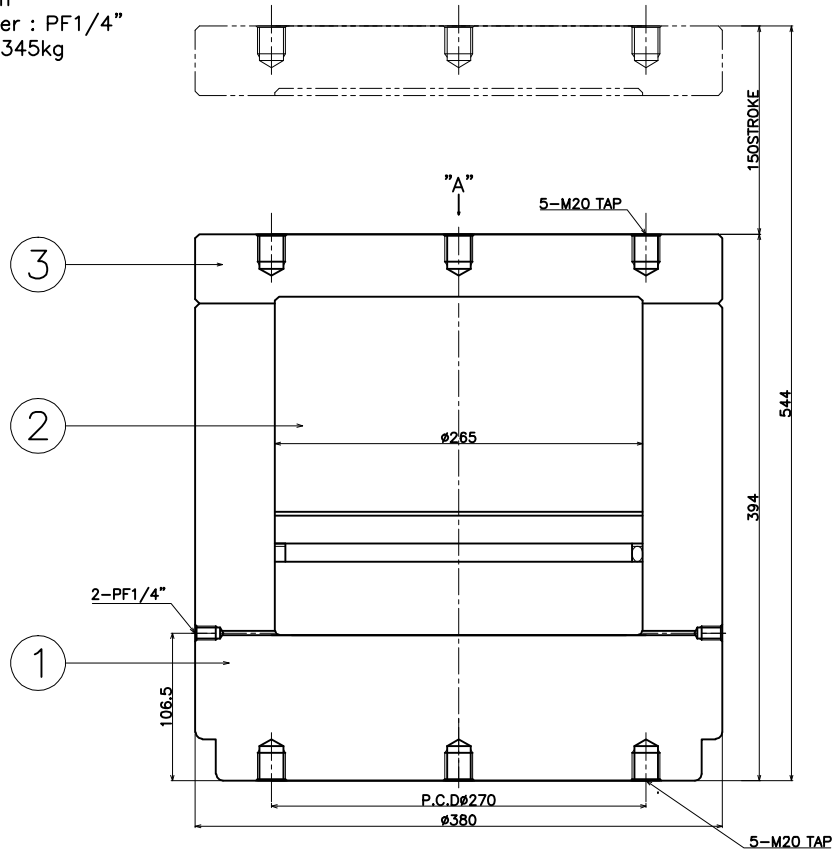


- \* hydraulic cylinder
- capacity : 800ton
- piston area(A) : 552cm<sup>2</sup>
- maximum pressure : 2000kgf/cm<sup>2</sup>
- working pressure : 1500kgf/cm<sup>2</sup>
- stroke : 150mm
- hydraulic coupler : PF1/4"
- weight : about 345kg



NO.	DESCRIPTION	SPECIFICATION	MATERIAL	Q'TY	REMARKS
1	TUBE	Ø380*344	SCM440	1EA	HYDMAG
2	PISTON	Ø265*244	S45C	1EA	HYDMAG
2	COVER	Ø380*50	SS400	1EA	HYDMAG

800ton\*150St

CUSTOMER	-		
PROJECT	HYDRAULIC CYLINDER		
<b>Hydmac</b> KOREA HYDMAG CORP.			
APP'D	000624	H.S.H	TITLE
CHK'D	000624	E.J.K	LAY - OUT
DES'D	000624	K.H.T	SCALE
DWN	000624	C.L.K	DWG NO
		KOR-HID01-001	

ITEM No. \_\_\_\_\_